

-Northtree-

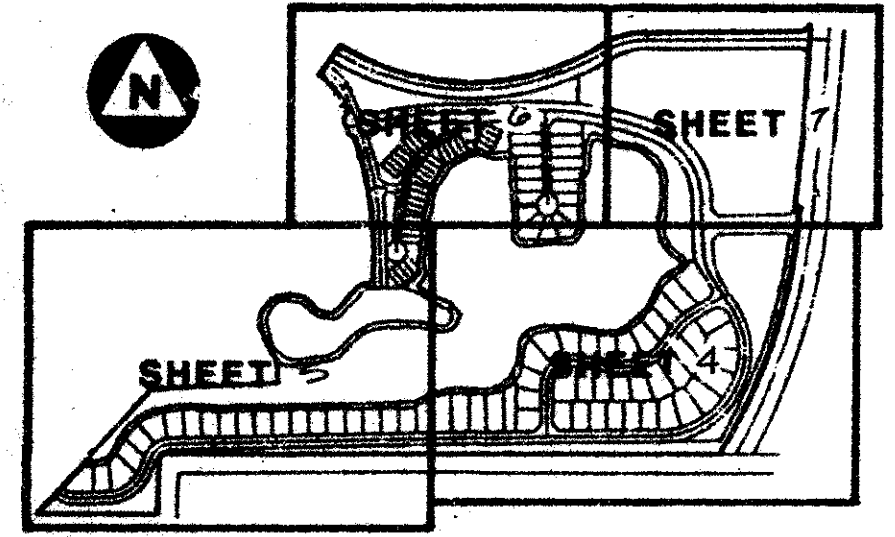
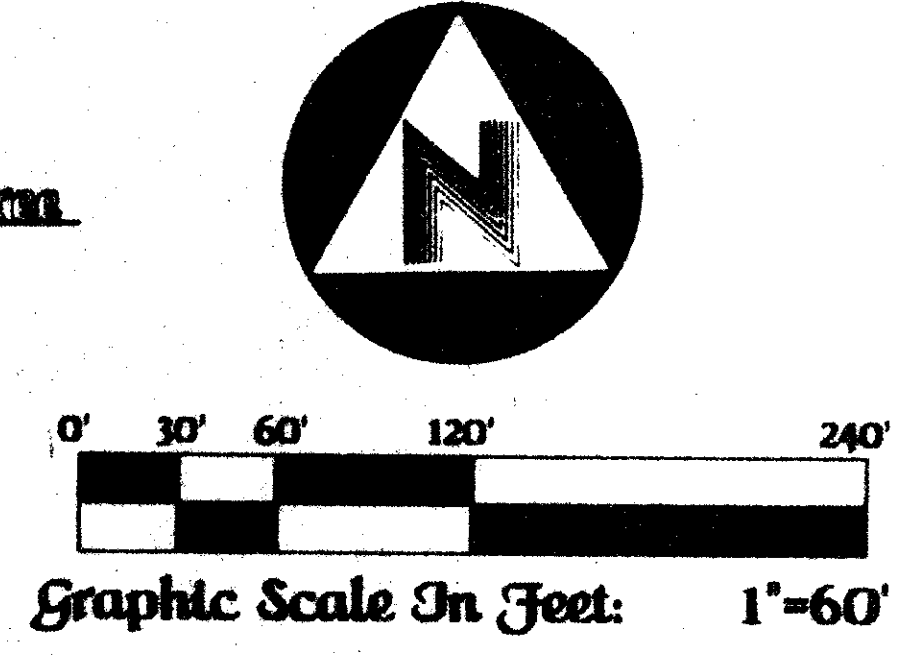
-Lying In Sections Nine, Ten And Sixteen, Township Forty Five South, Range Forty Two East-
 Being A Replat Of Portions Of Blocks Forty And Forty One, Palm Beach Farms Company's Plat Number Three, Recorded In Plat Book Two,
 Pages Forty Five Through Fifty Four, Inclusive, Public Records, Palm Beach County, Florida
 -A Part Of Boynton West, A Planned Unit Development-
 July, A.D., Nineteen Hundred Eighty Six

7/10/86 145192
 SUBDIVISION *Northtree*
 BOOK *568* PAGE *191*
 FLOOD ZONE *B* FLOOD MAP # *1858*
 QUAD # *9416049* ZONING
 SE *14634* ZIP CODE *33467*
 PUD NAME
 TAZ *439*

191
 State of Florida)
 County of Palm Beach)
 This Plat was filed for record
 at this day of
 A.D., 1986, and
 duly recorded in Plat Book
 on Pages thru
 John S. Shankle,
 Clerk of the Circuit Court.
 By _____
 Deputy Clerk

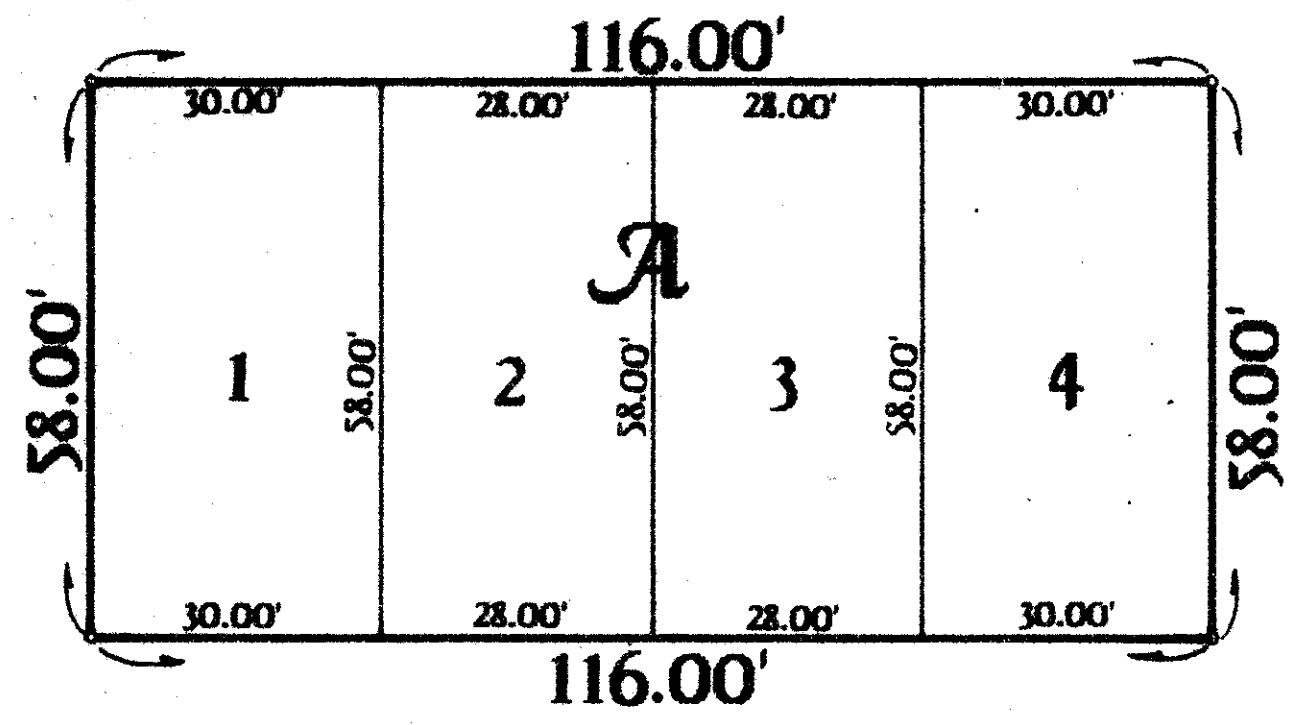
Sheet 06 of 07

Palm Beach Farms Company's Plat Number Three
 (Plat Book Two, Pages Forty Five Through Fifty Four)



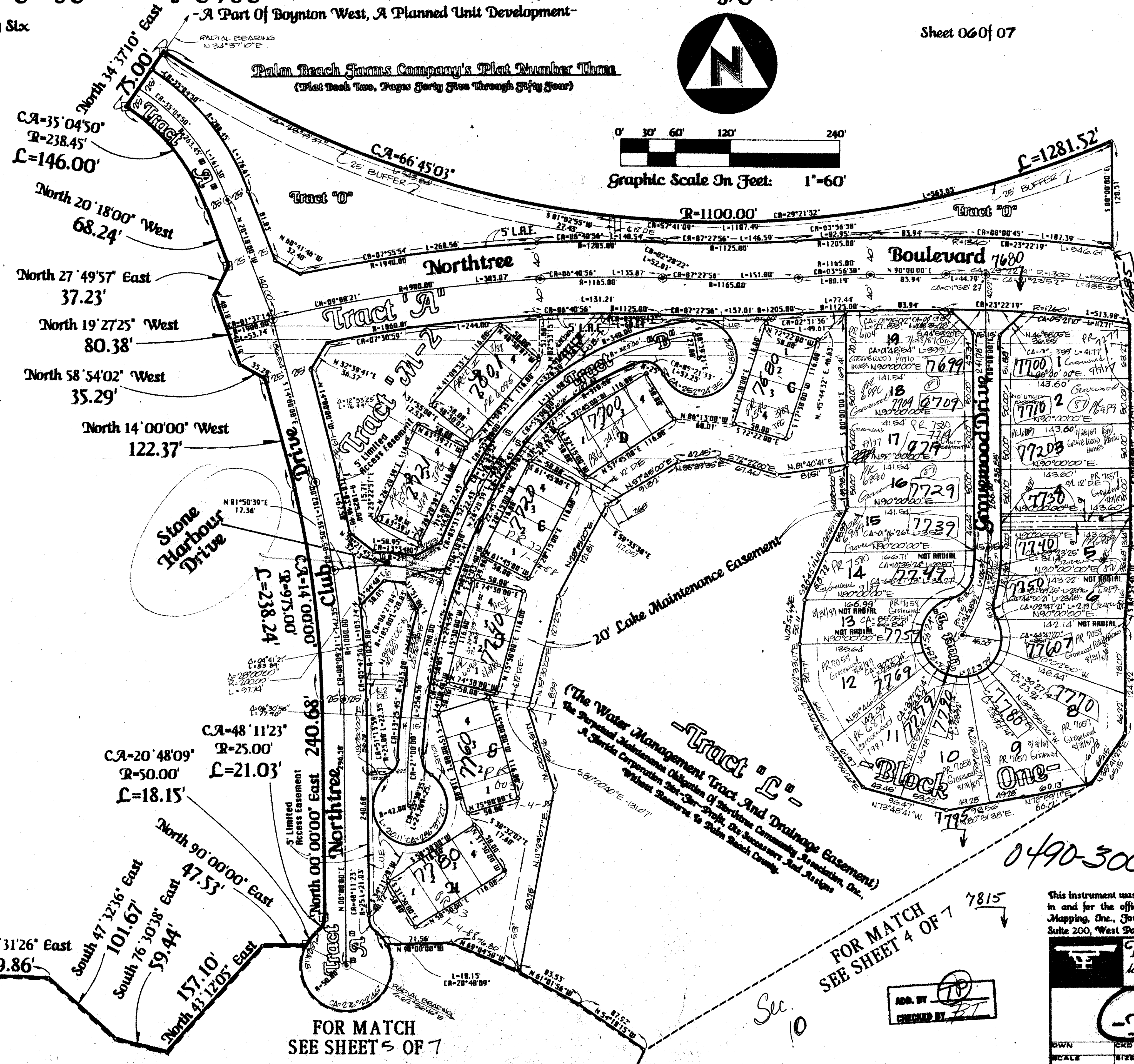
KEY MAP
 Not To Scale

Palm Beach Farms Company's Plat Number Three
 (Plat Book Two, Pages Forty Five Through Fifty Four)



Typical Lot Cluster Detail
 Scale: 1"=20'

Note:
 All Interior Lot Angles Are 90°00'00"



FOR MATCH
 SEE SHEET 7 OF 7

24464-67
 9686636

Collect
 Plat. 86-25
 RTS/Pud
 Snap 8
 FS - 24 - Full
 "B"

0490-30056/191

FOR MATCH
 SEE SHEET 4 OF 7

ADD. BY *[Signature]*
 CHECKED BY *[Signature]*

This instrument was prepared by Wm. R. Van Campen, R.L.S., in and for the offices of Bench Mark Land Surveying and Mapping, Inc., Four Points Centre, 50 South Military Trail, Suite 200, West Palm Beach, Florida, 33415 (305) 689-2111

BENCH MARK
 land surveying and mapping, inc.
 WEST PALM BEACH, FLORIDA

-Record Plat-
-Northtree-

OWN	CRD	DATE	WD. NO.
SCALE	SIZE	FB #	SHEET OF

FOR MATCH
 SEE SHEET 5 OF 7

Sec. 10

PLAN HOLD CORPORATION • IRVINE, CALIFORNIA
 RECORDED BY NUMBER 07548

PLAN HOLD CORPORATION • IRVINE, CALIFORNIA
 RECORDED BY NUMBER 07548

PLAN HOLD CORPORATION • IRVINE, CALIFORNIA
 RECORDED BY NUMBER 07548